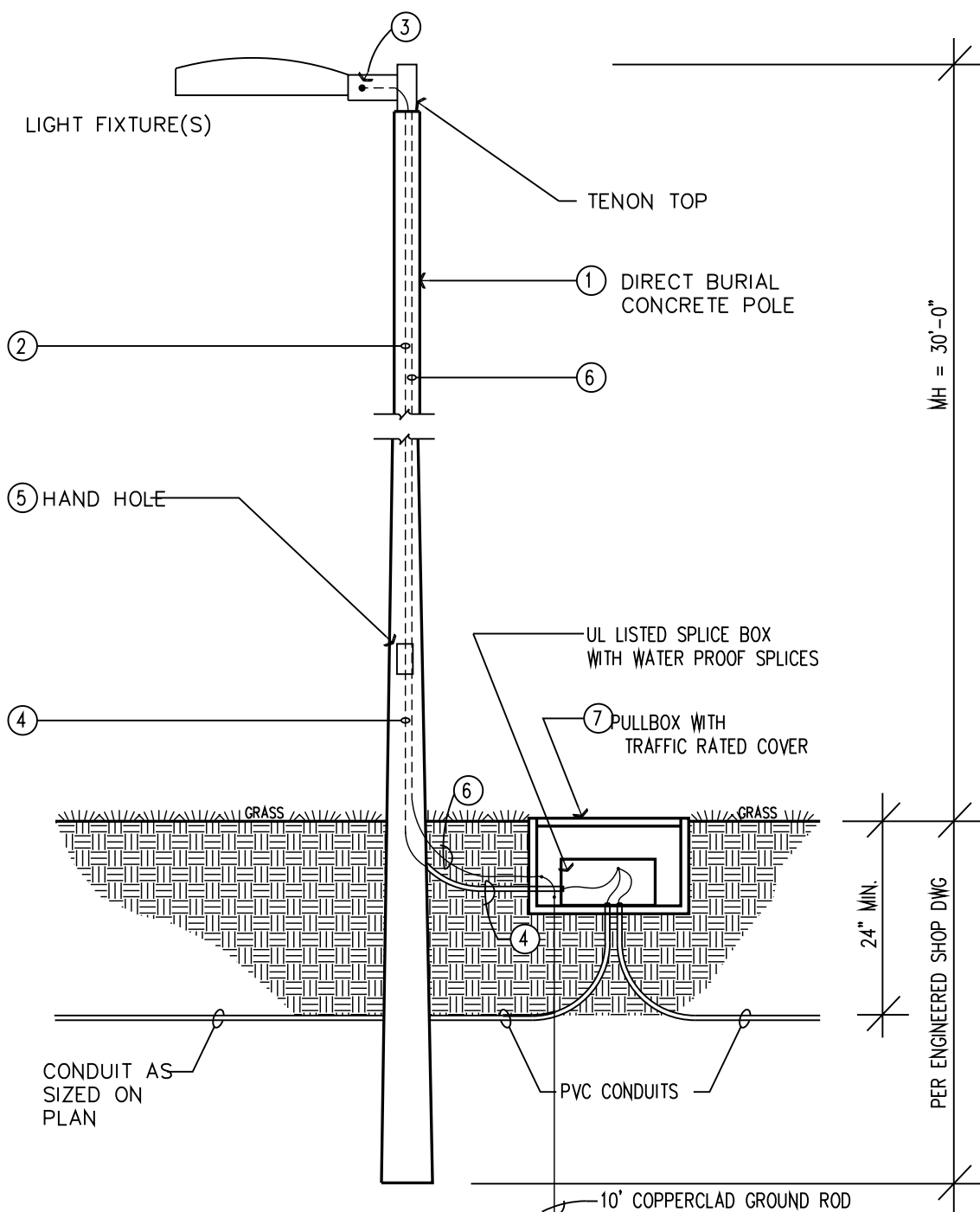
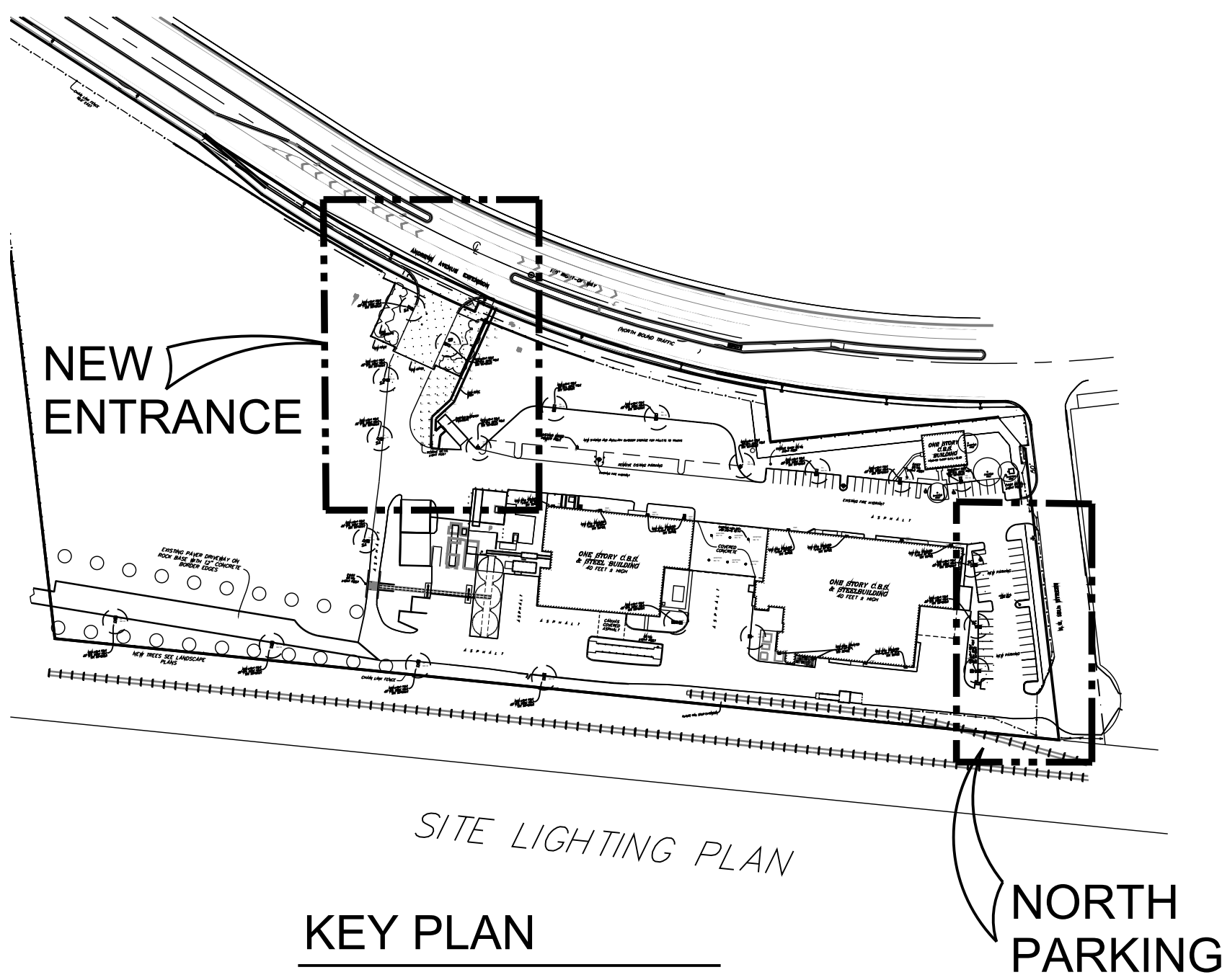


IT IS A VIOLATION OF THE LAW FOR ANY PERSON UNLESS ACTING UNDER THE DIRECTION OF A LICENSED ARCHITECT TO ALTER THESE PLANS AND SPECIFICATIONS. THE DOCUMENT CONTAINS PROPERTY INFORMATION AND SHALL NOT BE USED OR REPRODUCED, OR ITS CONTENTS DISCLOSED, IN WHOLE OR IN PART, WITHOUT THE PRIOR WRITTEN CONSENT OF GALLO HERBERT ARCHITECTS. CONTRACTOR(S) SHALL VERIFY EXISTING CONDITIONS AND CORRELATE DIMENSIONS PRIOR TO PROVIDING THE WORK DETAILED IN THESE DRAWINGS, AND SHALL PROMPTLY NOTIFY THE DESIGNER OF ANY DISCREPANCIES.

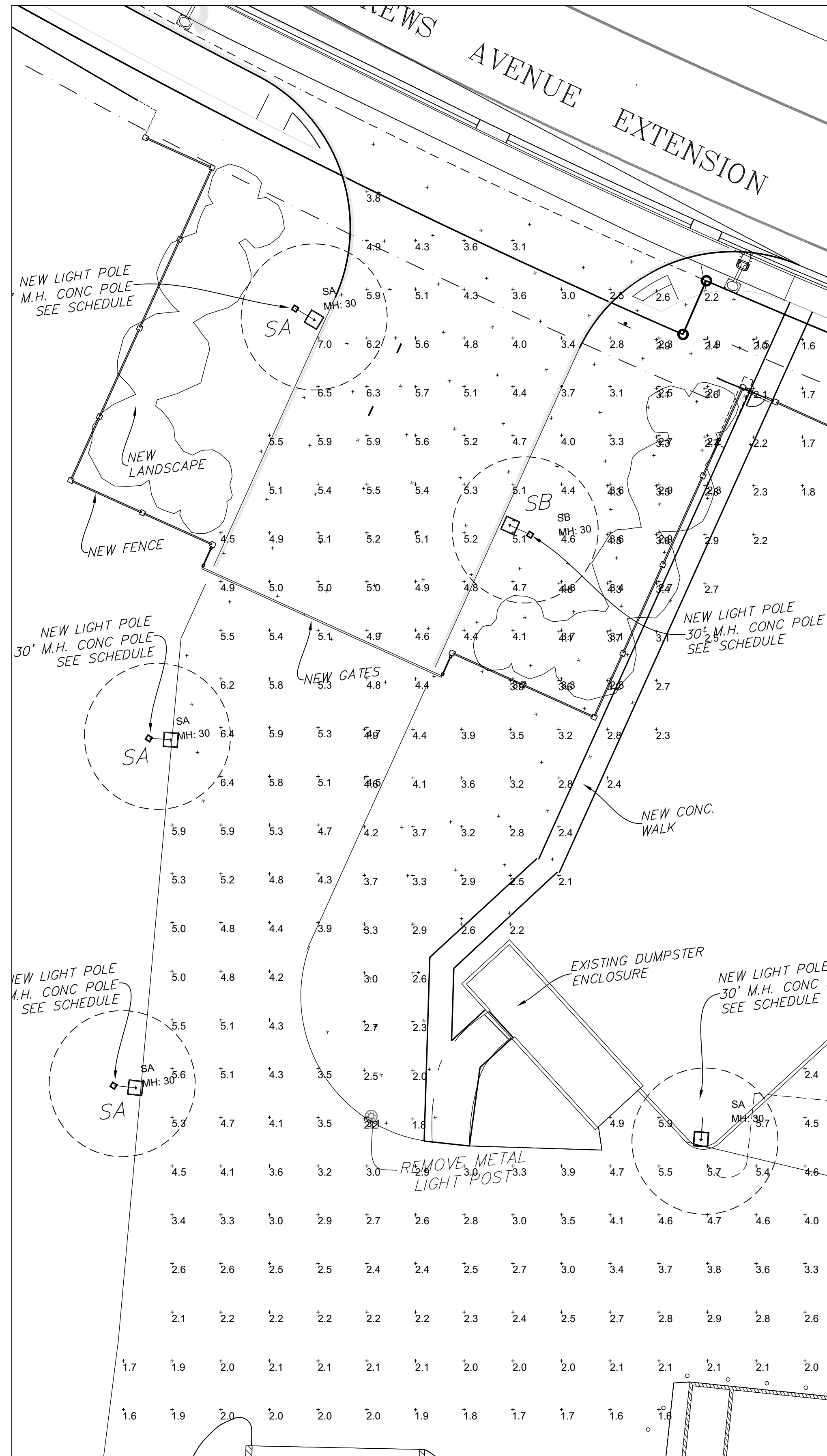
COPYRIGHT 2024 GALLO HERBERT ARCHITECTS



- STANDARD LIGHTING POLE DETAIL
- (1) LIGHTING POLE. THE MANUFACTURER IS TO PROVIDE CERTIFICATION BY FLORIDA PE, SHOWING WIND LOAD RATING OF 170 MPH WITH SPECIFIED FIXTURES INSTALLED. THE FINAL POLE SET IS TO BE DETERMINED BY THE PROFESSIONAL ENGINEER.
 - (2) INTERNAL WIRING. INTERNAL WIRING TO BE IN UL LISTED CONDUITS, INSIDE POLE. SEE NOTE 3.
 - (3) LIGHT FIXTURE CONNECTIONS. REFER TO LIGHT MANUFACTURER FOR REQUIREMENTS, INCLUDING TEMPERATURE REQUIREMENTS (COMMONLY 150C). CONDUCTORS TO BE UL LISTED "FIXTURE" CONDUCTORS. (UL "RECOGNIZED" APPLIANCE WIRES NOT PERMITTED.) OBTAIN BUILDING DEPARTMENT APPROVAL FOR CONDUCTORS, CONNECTORS, AND ACCESSIBILITY.
 - (4) CONDUITS. CONDUITS BELOW HAND HOLE IN POLE TO BE UL LISTED WITH "BRANCH CIRCUIT" THIN CONDUCTORS.
 - (5) HAND HOLE. HAND HOLE WITH UL LISTED BOX CAST IN POLE WITH WATERPROOF SPLICES.
 - (6) GROUND WIRE IN POLE. CONNECT BOTTOM TO #4 BARE GROUND CONDUCTOR. CONNECT TOP TO GROUND LUG IN FIXTURES.
 - (7) TRAFFIC RATED PULL BOX. HIGH STRENGTH COMPOSITE CONSTRUCTION RATED FOR DESIGN LOAD OF 5,000 LBS OVER A 10" SQUARE. COVER LETTERING = "LIGHTING". DO NOT PLACE IN PAVED AREA, KEEP IN GRASSED AREAS. QUARTZITE COMPOSITE FK STYLE. 1-800-346-3087
 - (8) MUCK. IF SOFT SOILS ARE FOUND ON THE PROPERTY, THIS POLE DESIGN WILL BE MODIFIED TO ACCOMMODATE. NOTIFY ENGINEER IMMEDIATELY.
 - (9) SITE CONDITIONS. IF SITE CONDITIONS ARE DISCOVERED WHICH REQUIRE ANY POLE (S) TO BE MOVED OVER 4 FEET, NOTIFY THE ENGINEER IMMEDIATELY.

3 LIGHT POLE DETAIL

SCALE 1/4" = 1'-0"



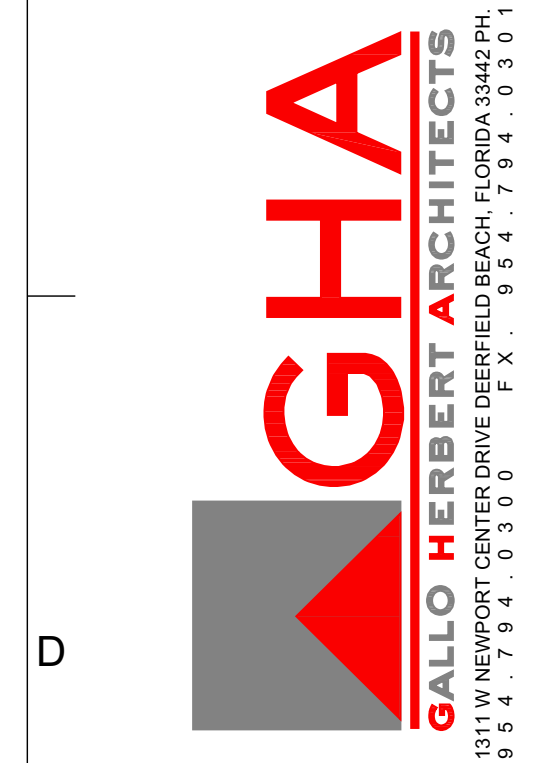
2 PARTIAL SITE LIGHTS PHOTOMETRIC PLAN NEW ENTRANCE

SCALE 1/16" = 1'-0" FOR FURTHER INFORMATION, SEE PLANS BY WINNINGHAM & FRADLEY, ENGINEERS, AND MCLAGHLIN ENGINEERING FOR SURVEY.



1 PARTIAL SITE LIGHT PHOTOMETRIC PLAN NORTH PARKING

SCALE 1/16" = 1'-0"



AA26001731
[SEAL]
WILLIAM J. GALLO FL AR0008440

Brian Herbert Digitally signed by Brian Herbert
Date: 2024.10.09 15:06:57 -04'00'

[PROJECT]
BRIAN P. HERBERT FL AR0015474

DRC
BONSAL TURN
PZ23-1200032
12/04/2024
1200 W 18TH ST
POMPAHO BEACH FL 33069

[OWNER]
OLDCASTLE APG

[REVISIONS]		
No.	Description	Date
B	MINOR SITE SBMTL	07-19-2023
	MINOR SITE SBMTL	06-25-2024
	MINOR SITE SBMTL	09-30-2024

[PROJECT STATUS]
MINOR SITE PLAN SUBMITTAL

[DATE]
JUNE 25, 2024

[PROJECT NUMBER]
2123

[SCALE]
AS SHOWN

[DRAWN BY]
JET

[CHECKED BY]
[DRAWING TITLE]

SITE LIGHTING
PHOTOMETRIC PLAN

[DRAWING NUMBER]
SL-1